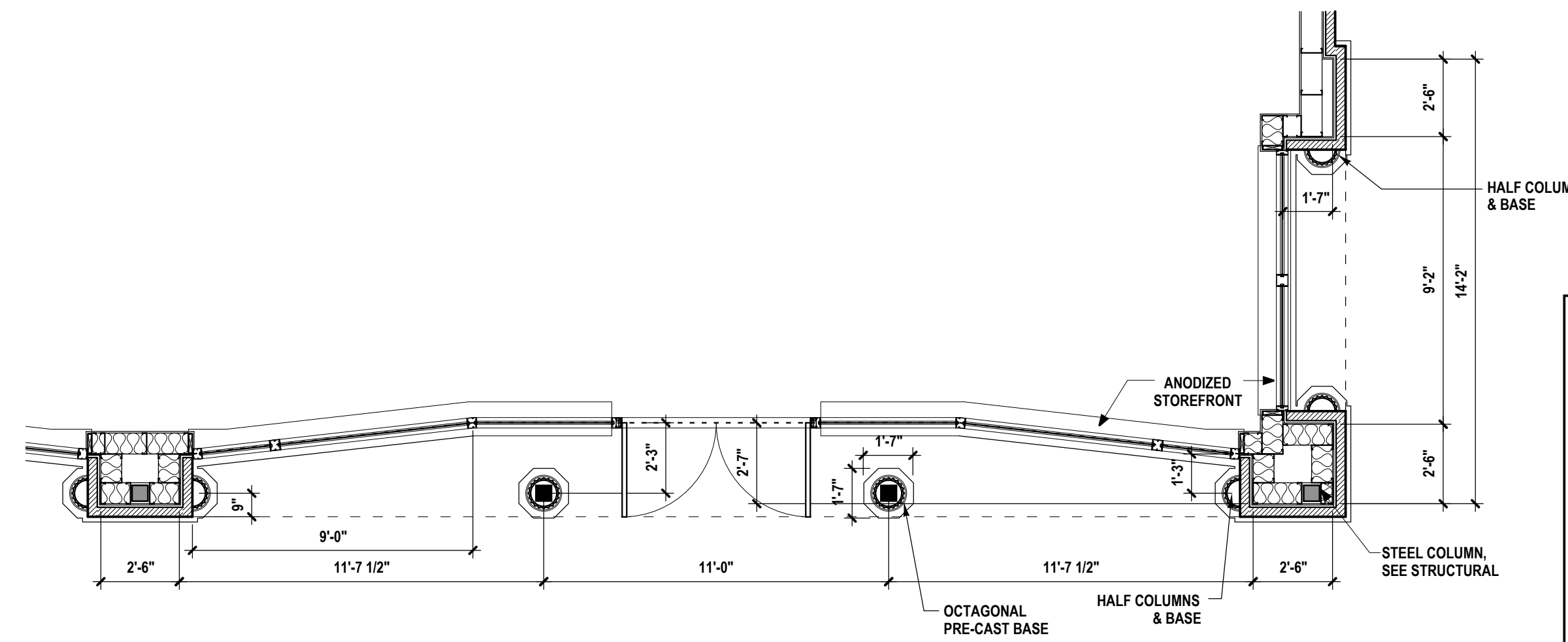


3 ENLARGED PLAN
1/4" = 1'-0"

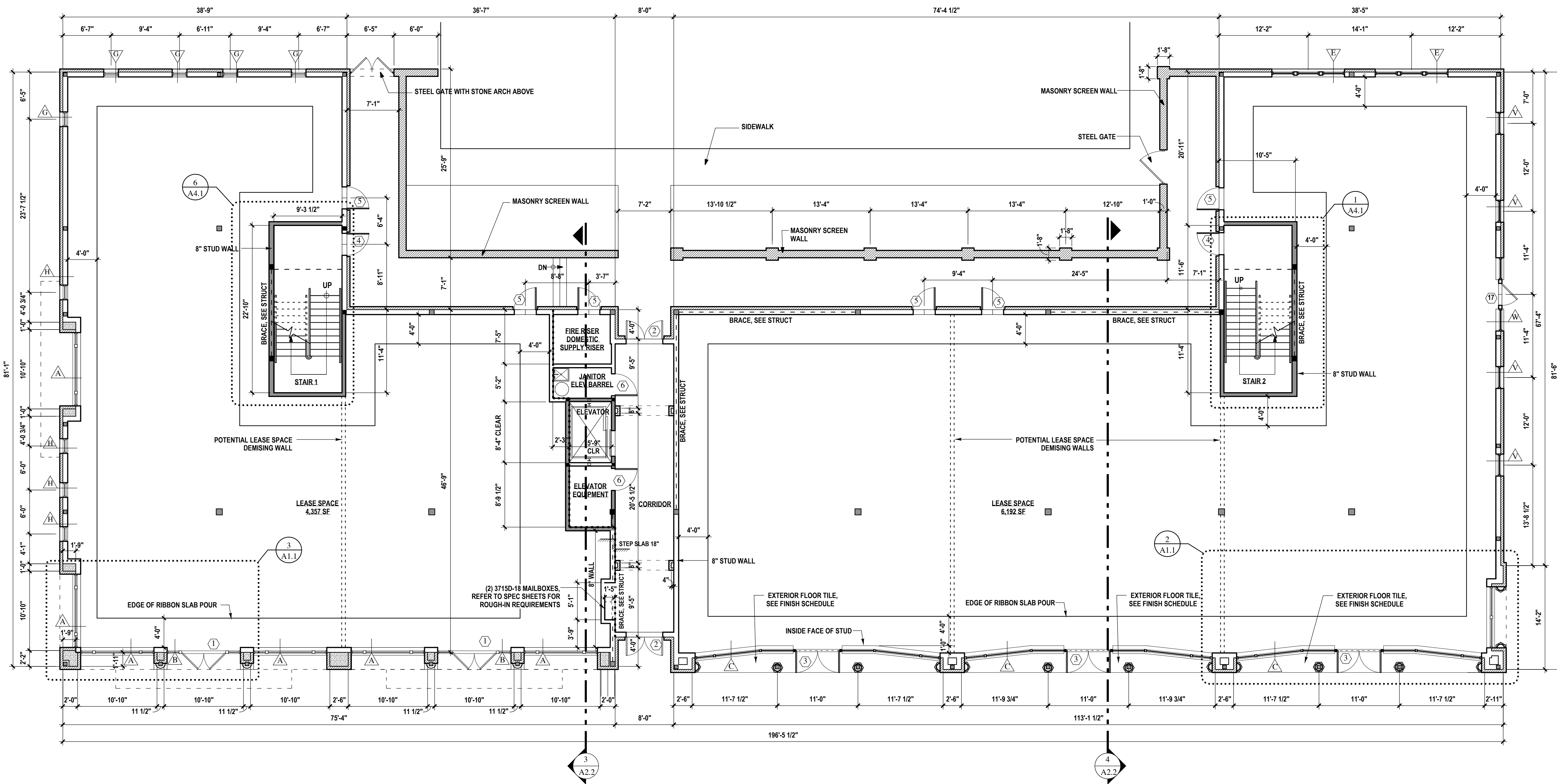


2 ENLARGED PLAN
1/4" = 1'-0"

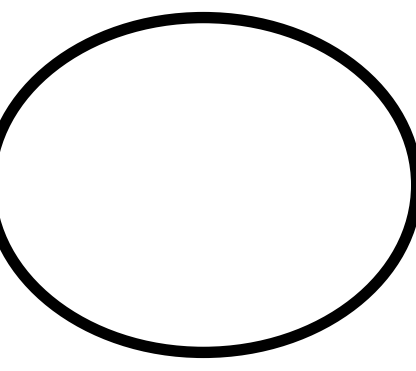
1ST FLOOR WALL LEGEND

- EXTERIOR WALL: 8" METAL STUDS @ 16" O.C. W/ 1/2" EXTERIOR GYP. BD, WEATHER BARRIER, BRICK VENEER, AND R-21 THERMAL INSULATION.
- PARTITION WALL: 6" METAL STUDS @ 16" O.C. W/ 5/8" GYP. BD. EA. SIDE TO DECKING ABOVE.
- 2 HR STAR ENCLOSURE: 8" METAL STUDS @ 16" O.C. W/ 2 LAYERS 5/8" TYPE X GYP. BD. EA. SIDE TO DECKING ABOVE (UL-R415)
- 2 HR SHAFT WALL ENCLOSURE: 2 1/2" J SHAPED STUDS @ 24" O.C. W/ 1" LINER PANEL AND TWO LAYERS 1/2" WALLBOARD (UL-R467)

NOTE:
ELEVATOR EQUIPMENT CEILING TO BE 1 HR RATED - 2 LAYERS OF 5/8" TYPE X GYP. BD. ON BOTTOM OF JOISTS.
STAIR & ELEVATOR CEILING ASSEMBLY TO BE 2 HR RATED - (1) LAYER OF 3/4" TYPE X GYP. BD. ON RESILIENT CHANNELS OVER (1) LAYER 3/4" TYPE X GYP. BD. AT BOTTOM OF WOOD TRUSSES.
PROVIDE WATER RESISTANT GYP. BD. AT ALL WALLS BACKING UP TO PLUMBING FIXTURES.



1 FIRST FLOOR PLAN
1/8" = 1'-0" AREA: 11,728 SF



WILLIAMS & DEAN ASSOCIATED ARCHITECTS

EIGHTEEN CORPORATE HILL DRIVE
LITTLE ROCK, AR 72205
P 501-224-1900
F 501-224-0873
WWW.WILLIAMSDEAN.COM



The Village at Hendrix
Town Center Building C
CONWAY, ARKANSAS

BUILDING C FLOOR PLAN

REVISION: :DATE

19 MAY 08 :ISSUE DATE

07-154 :PROJECT NUMBER

:SHEET NUMBER

A1.1